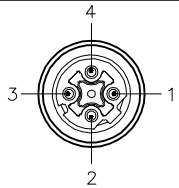

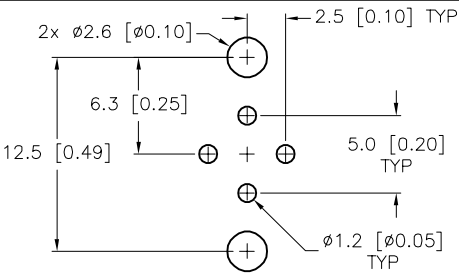


FEMALE END VIEW



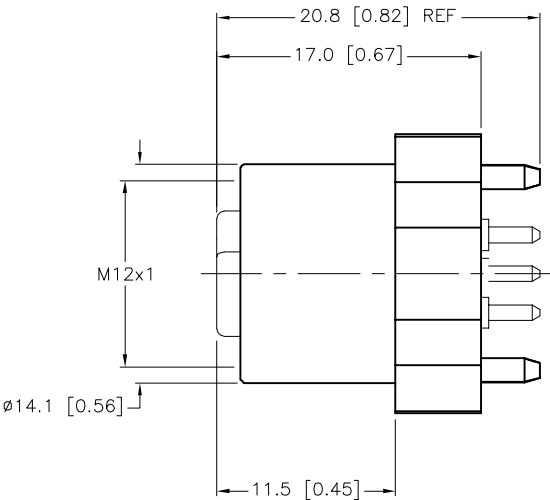
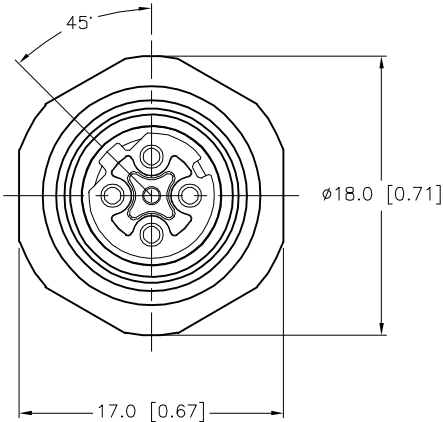
 *Ethernet*

BOARD LAYOUT

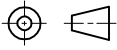



SPECIFICATIONS

CONTACT CARRIER MATERIAL/COLOR	NYLON/BLACK
CONTACT MATERIAL/PLATING	BRASS/GOLD
HOUSING/LOCKNUT MATERIAL	BRASS/NICKEL
WASHER MATERIAL	NYLON
RATED CURRENT [A]	4.0 A
RATED VOLTAGE [V]	250 V
NUMBER OF CONDUCTORS [AWG]	PRINTED CIRCUIT PINS
TEMPERATURE RATING	-40°C to +90°C (-40°F to +194°F)
PROTECTION CLASS	MEETS NEMA 1,3,4,6P AND IEC IP67



SOURCE DRAWING - FOR REFERENCE ONLY

RELATED DOCUMENTS 1. 2. 3. 4.					3RD ANGLE PROJECTION 		THIS DRAWING IS CONFIDENTIAL AND THE PROPERTY OF TURCK INC. USE OF THIS DOCUMENT WITHOUT WRITTEN PERMISSION IS PROHIBITED.		<div></div> <div>3000 CAMPUS DRIVE MINNEAPOLIS, MN 55441 1-800-544-7769 (763) 553-7300 (763) 553-0708 fax www.turck.us</div>						
					MATERIAL		DRFT RWC					DATE 03/17/06		DESCRIPTION FKDD 44-PCB	
					SEE SPECIFICATIONS		DSGN					SCALE 1=.5			
FINISH		ALL DIMENSIONS DISPLAYED ON THIS DRAWING ARE FOR REFERENCE ONLY		UNIT OF MEASUREMENT MILLIMETER [INCH]		IDENTIFICATION NO. U3-00781		REV B							
SEE SPECIFICATIONS															
B UPDATE FEMALE END VIEW, SEE ECCO		RWC		03/16/07		17435									
REV DESCRIPTION		BY		DATE		ECO NO.									

DO NOT SCALE THIS DRAWING

FILE: U3-00781

SHEET 1 OF 1